

Quick Start Guide

Eco3D Standard



Using Eco3D Standard

This quick start guide covers using Eco3D Standard basic features and terminology.

Installing

Having purchased Eco3D Standard you can download the installers from the Eco3D website. Sign in to your account at www.eco3d.co.uk and select 'Account' then 'Licensing' to gain access to your download. Run the downloaded installer file and follow the on screen instructions.



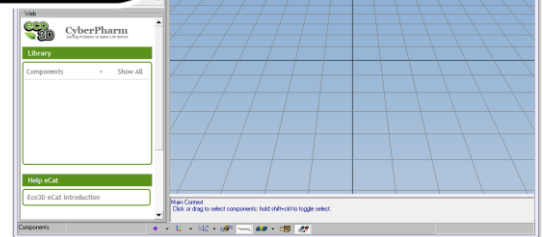
Sign In



Account



Licensing

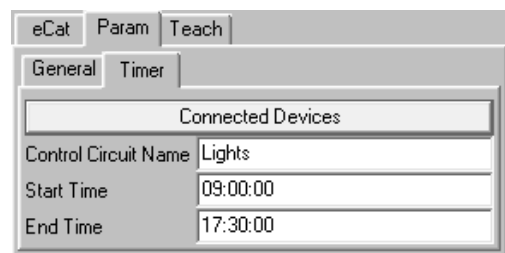


Building a Layout

Load Eco3D and open the Eco3D Standard simulation engine from the Eco3D main menu.

Use the Eco3D Library in the left hand side bar (registration required – see www.eco3d.co.uk) to drag components into the 3D world.

Drag in an electricity meter and a switch timer first, and then any further components will calculate energy consumption automatically.



Components Details

Ensure that component you wish to examine is selected; the currently selected component is shown by a red cubed outline.

Click the Param tab next to the eCat tab, this will show the parameters for the component.

Running the Simulation

Once you have constructed your layout you can run the simulation to view the results. The simulation can be run for any custom duration, reports can be generated to show the results using the reports menu.



More Information

From the Eco3D main menu click the help button to gain further assistance with using Eco3D Standard.

